



NH Governor's Commission on Disability



# GCD's Operating Budget for FY 24/25

## Presentation to New Hampshire Senate Finance Committee

April 11, 2023

# The ADA is key to understanding the GCD.

The ADA put the force of law behind the thought that all have the right to opportunity—the opportunity to be independent, make choices and have control over their lives.



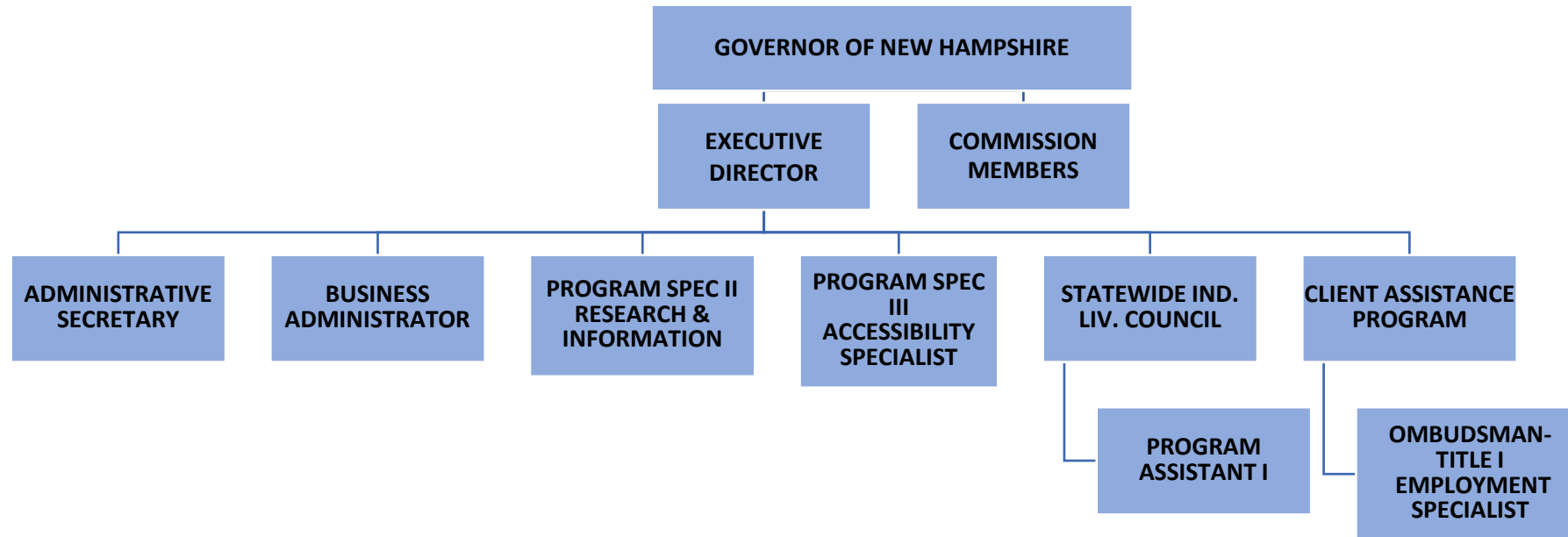
The signing of the ADA  
1990, President H. W. Bush

# The GCD is statutorily comprised of an Executive Director, Agency staff, Commission and various Internal Committees

- The Executive Director of the GCD oversees the agency and staff, conducts the day-to-day operations, communicates with the Office of the Governor, and is the catalyst that guides the agency's numerous programs and initiatives.
- GCD Members (currently 17- Governor Appointed, and 6 - statutorily assigned ex-officio members). All have special experience with a disability, either personally, through family experience, or business/marketplace interaction.



# GCD Organizational Chart



# GCD: The Core Functions

## Education Collaboration Consultation

- Advises the Governor, State Agencies and the NH Legislature on the needs, rights and interests of citizens with disabilities.
- Coordinates and educates state agency compliance with the Americans with Disabilities Act.
- Makes recommendations regarding the adequacy of state programs, plans, and budgets for services for persons with disabilities.
- Monitors and report on bills of interest to persons with disabilities.

# GCD: The Core Functions

## Education Collaboration Consultation

- Co-administers, pursuant to RSA 195-K, a qualified ABLE savings account program as authorized in the Achieving a Better Life Experience Act of 2014, and in accordance with the provisions of section 529A of the United States Internal Revenue Code of 1986.
- Implements and operates the 100% federally funded Client Assistance Program, designed to facilitate concerns that arise between persons with disabilities and vocational rehabilitation. Title 1 Employment matters also are addressed.
- Administers, pursuant to RSA 362-E, the Telecommunications Equipment Assistance Program to distribute telecommunication devices to persons with specific impairments impacting telephone use.

# GCD: The Core Functions

## Education Collaboration Consultation

- Receives an annual appropriation to fund NFB Newsline, an electronic service that allows any blind, visually impaired or print disabled person access to a variety of media and information.
- Implements the statutory requirements imposed by RSA 275-C:11 regarding the Governor's Commission on Disability Architectural Barrier Free Design Committee.
- Houses the Statewide Independent Living Council (SILC), an independent cross-disability council, which provides leadership and advocacy in support of the independent living philosophy.

# GCD: The Core Functions

## Education Collaboration Consultation

- Strategic use of social media has served as a cost-effective means to educate a wide audience on issues regarding the ADA. By defining audiences and issues, and using GCD's data from the internal data log, social media has proven to be effective.
- In addition, social media is a practical, no-cost option for collaboration and support of a range of State of New Hampshire agencies, advocacy groups, and those with special interest in issues surrounding disability.



# The GCD is NH's ADA Resource

- National Association of Governor Commissions on Disability
- STABLE Partner States Committee
- Northeast Client Assistance Program (CAP) Work Group
- Commission on Deafness & Hearing Loss
- Legislative Commission on PTSD & Traumatic Brain Injury
- Statewide Coordinating Council for Community Transportation
- State Rehabilitation Council
- Statewide Independent Living Council
- Statewide Trail Advisory Committee
- Joint Committee on Code Enforcement
- Building Code Review Board
- Ethics Advisory Committee
- Medical Care Advisory Council
- Public Water Access Advisory Board



2019 GAA  
Ceremony

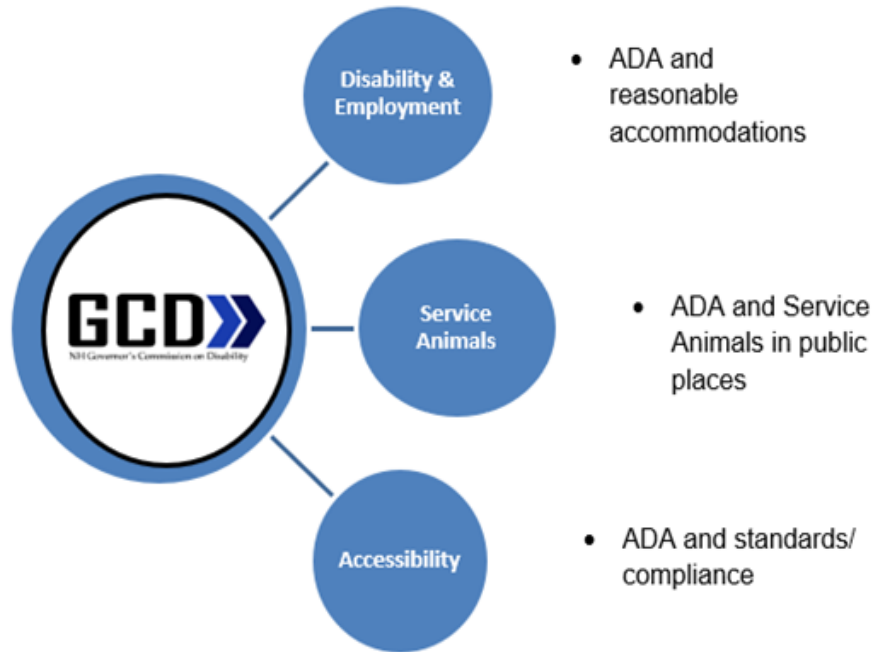
# GCD Facts: Work Interconnectivity (3 examples)

**Accessibility Specialist** – Before a lease on a state building is signed, it is reviewed by the Accessibility Specialist for ADA compliance using a checklist based on 2010 Standards. Site visits are part of the process as is working with Admin Services. Recommendations and suggestions are made and the matter is brought before the GCD Architectural Barrier-Free Design Committee.

**Title 1 Employment Specialist** – With disability & employment such an important topic, it is understandable that the Employment Specialist (also Client Assistance Program Ombudsman) handles the most difficult of cases which may involve mental health issues or recovery in the workplace issues. It is not uncommon to work with Vocational Rehabilitation, Dept of Education, Bureau of Developmental Services, Granite State Independent Living and others. What is reasonable accommodation in the workplace? That's the kind of question the Employment Specialist may be involved with.

**Research & Information Specialist** – The GCD handles approximately 600 public inquiries a year and this includes those that have been directed to our office by the Constituent Services Department. The GCD and the Governor's Constituent Services Department have a long history of assisting one another in order to provide the best of customer service and to resolve difficult issues around the ADA.

# GCD Facts: Internal Data from Public Inquiries



- The GCD is citizen-centric. Inquiries come to the GCD's attention in a variety of ways and the information is internally logged. In addition to ensuring a rapid response, based on data provided, the GCD can get a picture of top ADA issues or concerns. The data is a tool to drive the GCD to strategically use its time and educational resources.
- Information on this chart is simplified for presentation purposes. For example, Accessibility Issues include accessible parking, building accessibility and more. Employment & Disability inquiries range from disability employment accommodations to assistance with removing obstacles to finding a job. Service Dog questions range from what are the differences between an emotional support animal and a service animal, to what questions may be asked of a handler of a service animal.

# GCD: By the **Numbers**...

**TEAP** – Pursuant to RSA 362-E, the GCD administers the Telecommunications Equipment Assistance Program (TEAP). The GCD receives \$96,000 from the Public Utilities Commission's (PUC) telecommunications relay service trust fund each fiscal year. Up to \$92,250 is awarded annually for a 2-year contract to a successful bidder

**NFB-NEWSLINE** - Pursuant to RSA 275-C:8-a, the GCD is appropriated \$31,500 annually to fund the National Federation of the Blind's Newsline for the Blind. Funding is from the PUC's telecommunications relay service trust fund.

# GCD: By the **Numbers**...

**SILC** - Contracts with NH Department of Education (DOE). Incorporates the Statewide Independent Living Council's (SILC) part-time Program Assistant into the GCD's staff structure. Scheduled to receive up to \$90,000 for FY2023 to support the SILC Program. Anticipates that a new contract with NH DOE will mirror prior contracts and funding for FY2024 and FY2025.

**NE ADA** - Contracts with the New England ADA Center (NE ADA) to act as its State Affiliate in NH. Scheduled to receive \$18,667 for FY2023 and \$4,000 for a portion of FY2024. The GCD is unable to determine funding for the remainder of FY2024 and FY2025. In the past, the GCD has received \$16,801 and \$16,000 for FY2021 and FY2022, respectively.



# GCD: By the Numbers...



## FY2022 ACTUAL versus OP BUDGET PASSED BY HOUSE (GENERAL FUNDS)

	FY2024 House Budget	FY2025 House Budget
General Fund Totals	558,893	572,779
FY2022 Actual	358,077	358,077
<b>Difference</b>	<b>200,816</b>	<b>214,702</b>

FY2022 versus FY2024 - Highlights of Significant Budget Issues				
Expenditure Class	FY2022 Actual	FY2024 House Budget	Over/ (Under)	Comments
010-Personal Services-Perm. Classi	125,476	195,492	70,016	Annual vacancy rate of 21% (i.e. 1.5 employees out of 7)
027-Transfers To Oit	7,092	13,667	6,575	\$9,701 Amount requested from DoIT \$3,966 New laptop, software, etc. for new p/t employee
050-Personal Service-Temp/Appointe	-	31,427	31,427	New part-time employee (ADA Coordinator)
060-Benefits	104,841	169,620	64,779	Annual vacancy rate of 21% (i.e. 1.5 employees out of 7)

FY2022 versus FY2025 - Highlights of Significant Budget Issues				
Expenditure Class	FY2022 Actual	FY2025 House Budget	Over/ (Under)	Comments
010-Personal Services-Perm. Classi	125,476	199,707	74,231	Annual vacancy rate of 21% (i.e. 1.5 employees out of 7)
027-Transfers To Oit	7,092	13,093	6,001	\$13,093 Amount requested from DoIT
050-Personal Service-Temp/Appointe	-	34,335	34,335	New part-time employee (ADA Coordinator)
060-Benefits	104,841	178,107	73,266	Annual vacancy rate of 21% (i.e. 1.5 employees out of 7)

# GCD: By the Numbers...



## FY2023 ADJUSTED AUTHORIZED versus OP BUDGET PASSED BY HOUSE (GENERAL FUNDS)

	<b>FY2024 House Budget</b>	<b>FY2025 House Budget</b>
General Fund Totals	558,893	572,779
FY2023 Adj Auth	536,779	536,779
<b>Difference</b>	<b>22,114</b>	<b>36,000</b>

<b>FY2023 versus FY2024 - Highlights of Significant Budget Issues</b>				
<b>Expenditure Class</b>	<b>FY2023 Adj Auth</b>	<b>FY2024 House Budget</b>	<b>Over/ (Under)</b>	<b>Comments</b>
010-Personal Services-Perm. Classi	207,387	195,492	(11,895)	FY2023 had 27 pay periods instead 26 pay periods Annual vacancy rate of 8% (i.e. 0.6 employees out of 7) Two employees started at a lower step than what was budgeted
011-Personal Services-Unclassified	92,904	87,553	(5,351)	FY2023 had 27 pay periods instead 26 pay periods
027-Transfers To Oit	9,209	13,667	4,458	\$9,701 Amount requested from DoIT \$3,966 New laptop, software, etc. for new p/t employee
050-Personal Service-Temp/Appointe	-	31,427	31,427	New part-time employee (ADA Coordinator)
060-Benefits	176,761	169,620	(7,141)	FY2023 had 27 pay periods instead 26 pay periods Annual vacancy rate of 8% (i.e. 0.6 employees out of 7)

<b>FY2023 versus FY2025 - Highlights of Significant Budget Issues</b>				
<b>Expenditure Class</b>	<b>FY2023 Adj Auth</b>	<b>FY2025 House Budget</b>	<b>Over/ (Under)</b>	<b>Comments</b>
010-Personal Services-Perm. Classi	207,387	199,707	(7,680)	FY2023 had 27 pay periods instead 26 pay periods Annual vacancy rate of 8% (i.e. 0.6 employees out of 7) Two employees started at a lower step than what was budgeted
011-Personal Services-Unclassified	92,904	87,552	(5,352)	FY2023 had 27 pay periods instead 26 pay periods
050-Personal Service-Temp/Appointe	-	34,335	34,335	New part-time employee (ADA Coordinator)

# GCD

NH Governor's Commission on Disability



Collage of GCD activity



Find us on Facebook  
**@NHGCDisability**



Find us on Twitter  
**@NHGCD**

[www.nh.gov/disability](http://www.nh.gov/disability)

**603.271.2773**



**FY2022 ACTUAL versus OP BUDGET PASSED BY HOUSE (GENERAL FUNDS)**



NH Governor's Commission on Disability



	FY2024 House Budget	FY2025 House Budget
General Fund Totals	558,893	572,779
FY2022 Actual	358,077	358,077
<b>Difference</b>	<b>200,816</b>	<b>214,702</b>

**FY2022 versus FY2024 - Highlights of Significant Budget Issues**

Expenditure Class	FY2022 Actual	FY2024 House Budget	Over/ (Under)	Comments
010-Personal Services-Perm. Classi	125,476	195,492	70,016	Annual vacancy rate of 21% (i.e. 1.5 employees out of 7)
027-Transfers To Oit	7,092	13,667	6,575	\$9,701 Amount requested from DoIT \$3,966 New laptop, software, etc. for new p/t employee
050-Personal Service-Temp/Appointe	-	31,427	31,427	New part-time employee (ADA Coordinator)
060-Benefits	104,841	169,620	64,779	Annual vacancy rate of 21% (i.e. 1.5 employees out of 7)

**FY2022 versus FY2025 - Highlights of Significant Budget Issues**

Expenditure Class	FY2022 Actual	FY2025 House Budget	Over/ (Under)	Comments
010-Personal Services-Perm. Classi	125,476	199,707	74,231	Annual vacancy rate of 21% (i.e. 1.5 employees out of 7)
027-Transfers To Oit	7,092	13,093	6,001	\$13,093 Amount requested from DoIT
050-Personal Service-Temp/Appointe	-	34,335	34,335	New part-time employee (ADA Coordinator)
060-Benefits	104,841	178,107	73,266	Annual vacancy rate of 21% (i.e. 1.5 employees out of 7)

**FY 2023 ADJUSTED AUTHORIZED versus OP BUDGET PASSED BY HOUSE (GENERAL FUNDS)**



NH Governor's Commission on Disability



	FY2024 House Budget	FY2025 House Budget
General Fund Totals	558,893	572,779
FY2023 Adj Auth	536,779	536,779
<b>Difference</b>	<b>22,114</b>	<b>36,000</b>

**FY2023 versus FY2024 - Highlights of Significant Budget Issues**

Expenditure Class	FY2023 Adj Auth	FY2024 House Budget	Over/ (Under)	Comments
010-Personal Services-Perm. Classi	207,387	195,492	(11,895)	FY2023 had 27 pay periods instead 26 pay periods Annual vacancy rate of 8% (i.e. 0.6 employees out of 7) Two employees started at a lower step than what was budgeted
011-Personal Services-Unclassified	92,904	87,553	(5,351)	FY2023 had 27 pay periods instead 26 pay periods
027-Transfers To Oit	9,209	13,667	4,458	\$9,701 Amount requested from DoIT \$3,966 New laptop, software, etc. for new p/t employee
050-Personal Service-Temp/Appointe	-	31,427	31,427	New part-time employee (ADA Coordinator)
060-Benefits	176,761	169,620	(7,141)	FY2023 had 27 pay periods instead 26 pay periods Annual vacancy rate of 8% (i.e. 0.6 employees out of 7)

**FY2023 versus FY2025 - Highlights of Significant Budget Issues**

Expenditure Class	FY2023 Adj Auth	FY2025 House Budget	Over/ (Under)	Comments
010-Personal Services-Perm. Classi	207,387	199,707	(7,680)	FY2023 had 27 pay periods instead 26 pay periods Annual vacancy rate of 8% (i.e. 0.6 employees out of 7) Two employees started at a lower step than what was budgeted
011-Personal Services-Unclassified	92,904	87,552	(5,352)	FY2023 had 27 pay periods instead 26 pay periods
050-Personal Service-Temp/Appointe	-	34,335	34,335	New part-time employee (ADA Coordinator)